

# MERCURE

## HOTEL

WELLINGTON ABEL TASMAN



*At the Mercure Wellington Abel Tasman Hotel,  
we take pride in ensuring your conference success.*

### **We're experts at hosting business events**

With four adaptable conference spaces for up to 120 people, our naturally lit rooms on a dedicated floor are perfect for various events. Whether you're organising training days, board meetings, seminars or conferences - the space can be adapted to meet your requirements.

Backed by the support of our experienced conference and events team, we are committed to exceeding your expectations.

### **Catering to your every need**

Our conference experience includes versatile catering options including morning and afternoon tea, lunch and dinner - conveniently hosted at Staten Eatery on the ground floor of the hotel.

- Discover a venue designed for your needs
- Light filled spaces
- Versatile room layout options
- Customisable menus
- One free car park for the conference facilitator

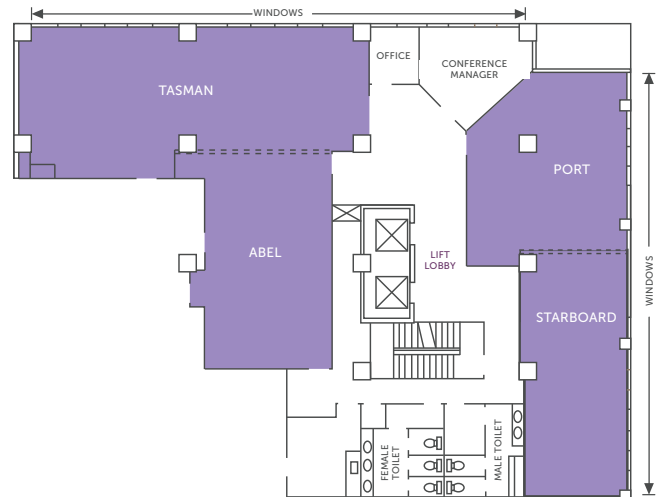
## Accommodation

Located in the heart of Wellington, our accommodation options offer comfort, space and convenience complete with free Wi-Fi, room service and dedicated work spaces.

- Our team will tailor a residential conference package to suit your needs.
- Central, comfortable and value-packed in Wellington city.
- Various room configurations including Double Double, Twin and Triple.



Rooms	Theatre	Classroom	U shape	Boardroom	Banquet
Abel	50	30	25	30	30
Tasman	100	50	40	45	70
Abel+Tasman	150	60	-	-	100
Port	30	16	15	18	24
Starboard	40	25	25	28	30
Port+Starboard	80	45	30	35	50



## Conference Packages

Our premium day delegate packages offer everything from room hire and set up to a delicious lunch, AV equipment and more.

Get in touch with our conference and events team to discuss your requirements. We will happily assist with a custom made conference package to suit your budget.

***Customised Budget - Customised Service - Customised Menus***